



DESIGN & PRODUCTION

*U1/16 Porrende Street
Narellan, NSW, 2567*

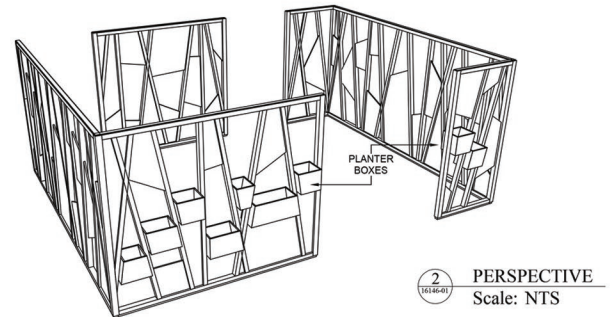
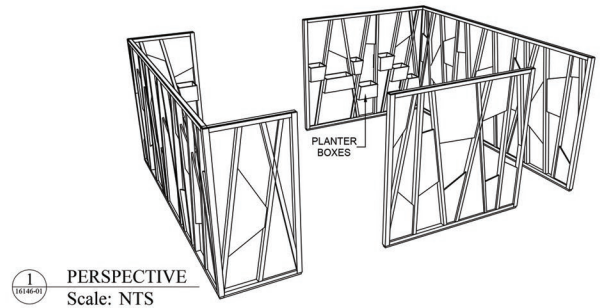
(02) 46284008

info@dandp.com.au

www.dandp.com.au

SHOP DRAWING SERVICES

- ▶ Are your experienced staff tied up producing plot drawings for factory staff or clients?
- ▶ Is production a bottleneck due to your experienced staff creating time consuming PDF documentation rather than producing your machine data to run your CNC?
- ▶ D&P's shop drawing service is a proven method to increase staff productivity and cut down on job costs and company overheads. D&P has been operating using this system successfully for 7+ years.
- ▶ Our shop drawing service allows you to allocate your experienced staff to the crucial tasks of:
 - 3D Modelling**
Is critical to the success of the job and meeting targets by ensuring correct construction methods and design are used.
 - Processing to CNC**
Critical to ensure all site sizing and client comments are captured in the final joinery item.
- ▶ D&P's shop drawing service will produce a higher quality product for a fraction of the cost.



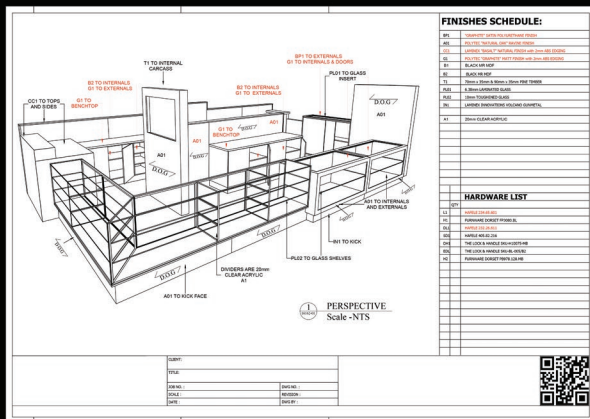
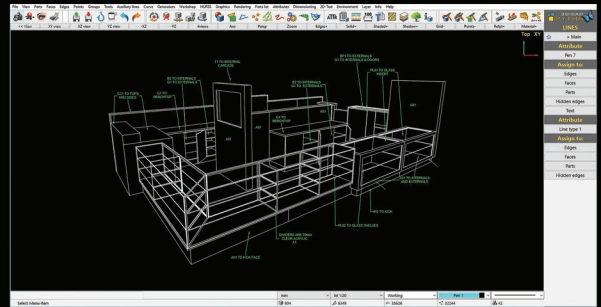
WHAT WE CAN DO FOR YOU

D&P have investigated extensively the role of a set out operator (set out staff).

Your current workflow

33%

Pytha / 3D Modelling



Shop Drawing Documentation

33%

33%

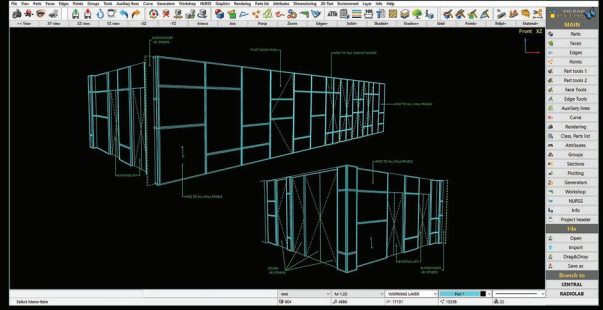
Revisions / Processing Machine Data For CNC



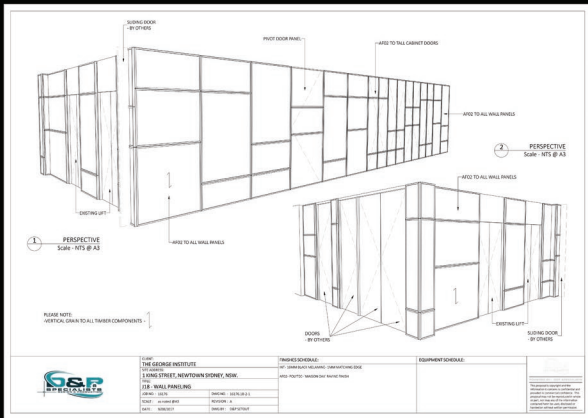
Your workflow using D&P shop drawing service

33%

Pytha /
3D Modelling



EMAIL



D&P Shop
Drawing Service

33%
TIME
SAVED

EMAIL



Completed Pytha File (PYO)
Completed PDF

33%

Revisions /
Processing Machine
Data For CNC




Effectively using D&P's set out service can potentially save 33% of time for everyone involved within your set out team. Subsequently, you are also able to submit a higher quality product that is drawn to industry standards.

Set out staff are becoming increasingly hard to find and at a significant fiscal cost to your company. Contract our services today to speed up production and grow your business without the overhead or on cost.

REQUIRED INFORMATION

- ▶ 1. Fill out the joinery item checklist (Refer to the image below).
- ▶ 2. Architects / Designers Plans / Finishes Schedule.
- ▶ 3. Pytha File - Complete.
- ▶ 4. Logo - JPEG Format.



Job Number:

Revision:

Your Company Name:

Your Client Name:

Clients Address:

Joinery Item:

Finishes Schedule:

Hardware / Equipment Schedule:

Additional Comments:

NOTE:
Please send through your logo as a .JPG file and we will put this on your drawings.

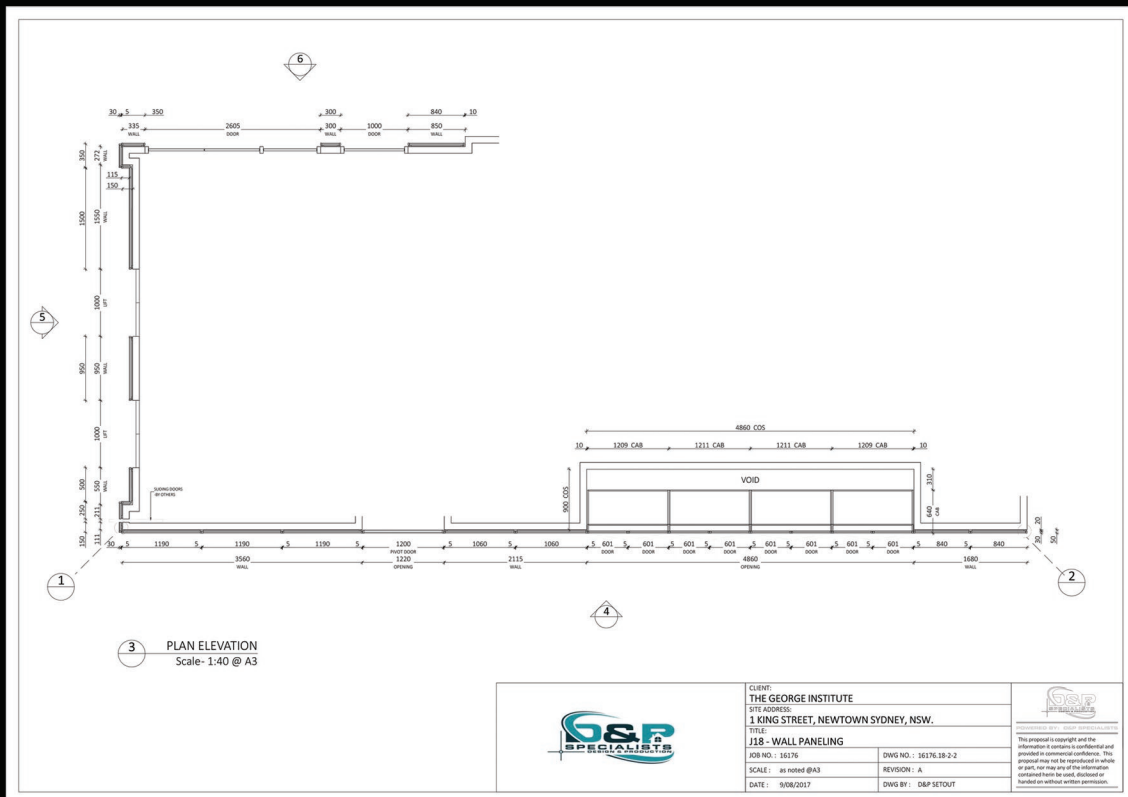
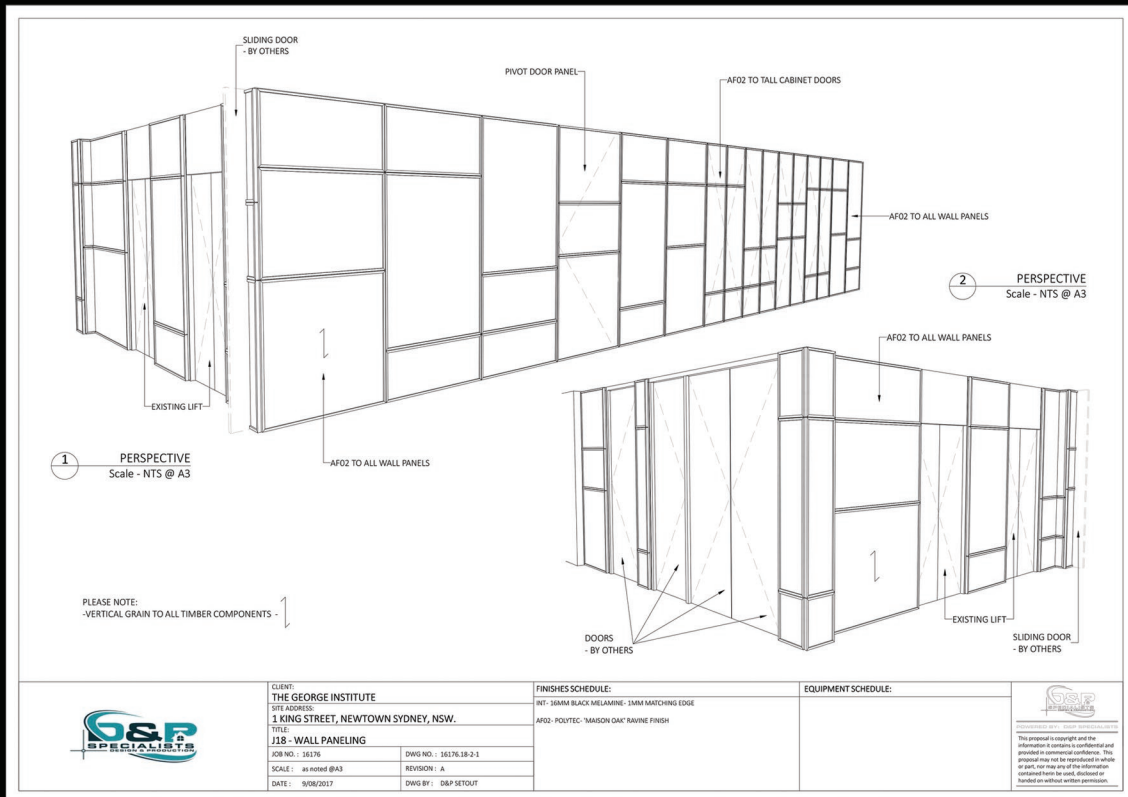
Unit 1, 16 Porrende Street
Narellan, NSW, 2567
(02) 4628 4008
info@dandp.com.au
www.dandp.com.au

EXAMPLE TITLE BLOCK

	CLIENT: THE GEORGE INSTITUTE SITE ADDRESS: 1 KING STREET, NEWTOWN SYDNEY, NSW.		FINISHES SCHEDULE: INT- 16MM BLACK MELAMINE- 1MM MATCHING EDGE AFO2- POLYTEC 'MAISON OAK' RAVINE FINISH	EQUIPMENT SCHEDULE:	 <p style="font-size: 8px;"> POWERED BY: D&P SPECIALISTS This proposal is copyright and the information it contains is confidential and provided in commercial confidence. This proposal may not be reproduced in whole or part, nor may any of the information contained herein be used, disclosed or handed on without written permission. </p>
	TITLE: J18 - WALL PANELING				
	JOB NO.: 16176	DWG NO.: 16176.18-2-1			
	SCALE: as noted @A3	REVISION: A			
	DATE: 9/08/2017	DWG BY: D&P SETOUT			

(Your Logo here)

EXAMPLE SHOP DRAWINGS



EXAMPLE SHOP DRAWINGS

